

EKN GRANT

AUSTRIAN NATIONAL LIBRARY



The Danube

A journey into the Past

In collaboration with the EUROPEANA Foundation the Austrian National Library will organize two Webinars dedicated to Danube collections in CENL Libraries

Together with Cenl colleagues from countries the Danube flows through, we will create a virtual exhibition to be presented on the EUROPEANA Portal in Spring 2021.

The Danube

A journey to the Past

The first webinar will be dedicated to sharing knowledge on the Danube collections and to define topics and themes for the Europeana exhibition.

The second webinar will be dedicated to innovative practices in presenting historical maps and images in virtual spaces, including animated maps and geo-referencing of historical sources.

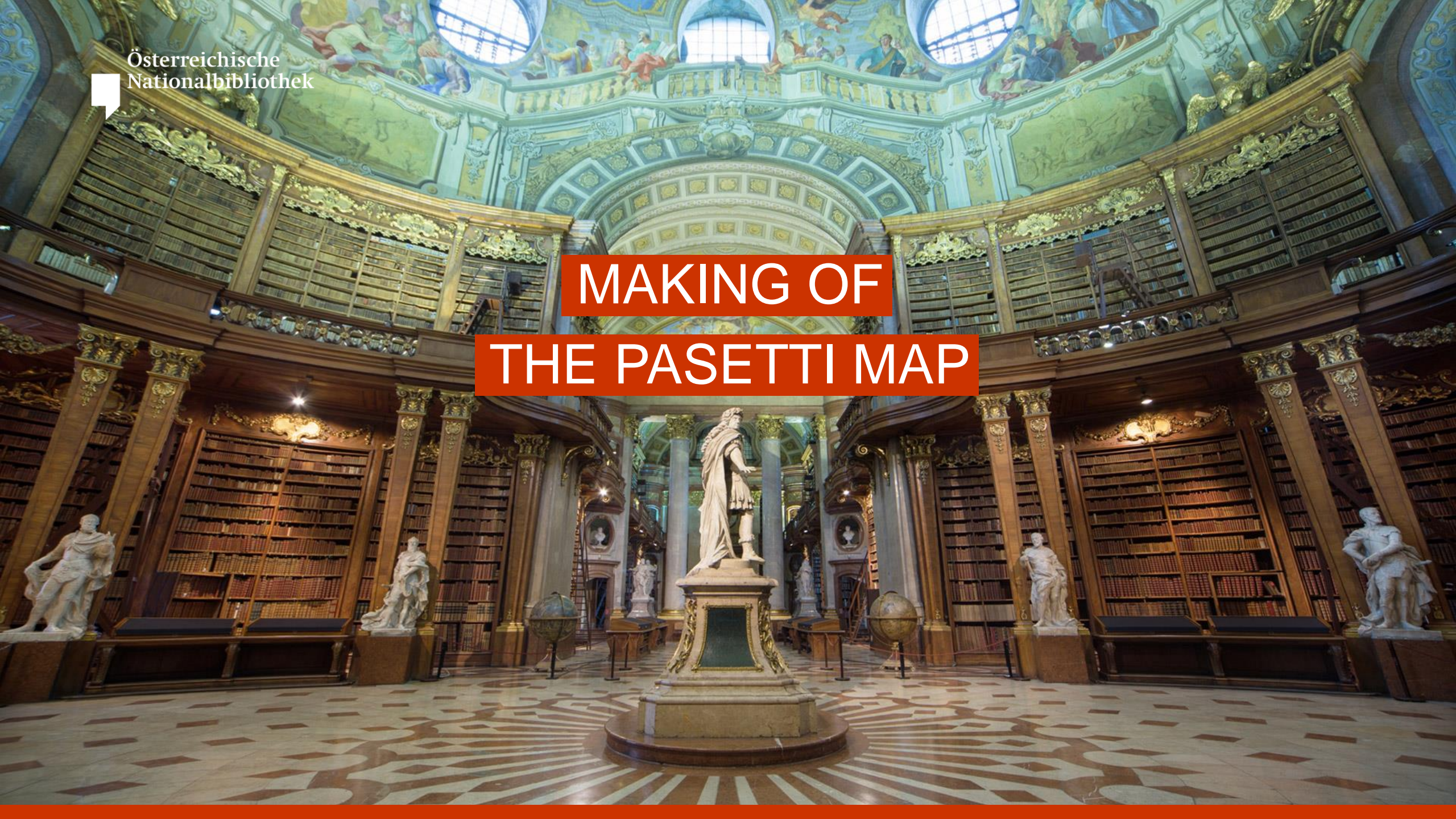
The Danube

A journey to the Past

The Danube rises in Western Germany and flows for some 1,770 miles (2,850 km) to its mouth on the Black Sea, passing Germany, Austria, Slovakia, Hungary, Croatia, Serbia, Bulgaria, Romania, Moldova, and Ukraine.

The highlight of the exhibition is a spectacular 44-meter-long reproduction of the famous Pasetti map. This map, published in 1857, shows an extremely precise image of the Danube in the territory of the Habsburg Monarchy from Passau to the Iron Gate.

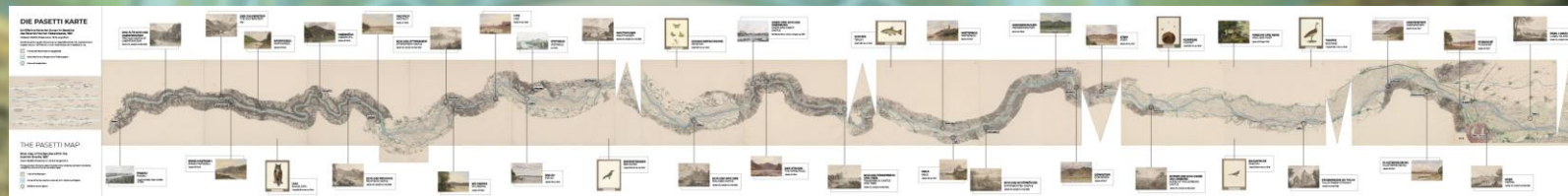
MAKING OF THE PASETTI MAP



WALL 1

Segment: 1 – 13

Length: 11 meters



WALL 2

Segment: 13 – 27

Length: 11 meters



WALL 3

Segment: 28 – 39

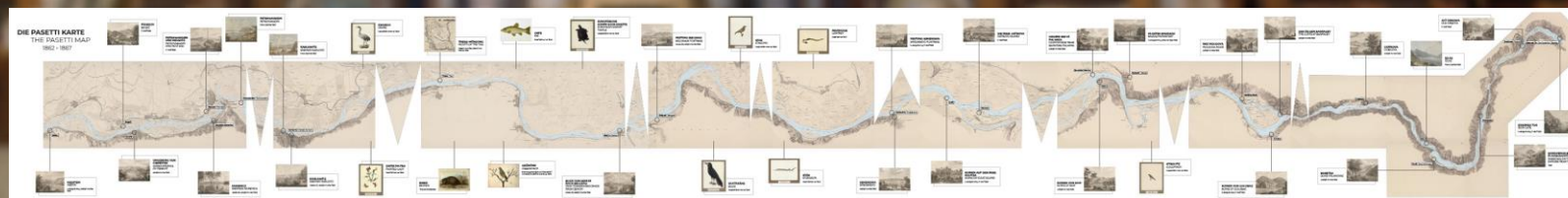
Length: 11 meters

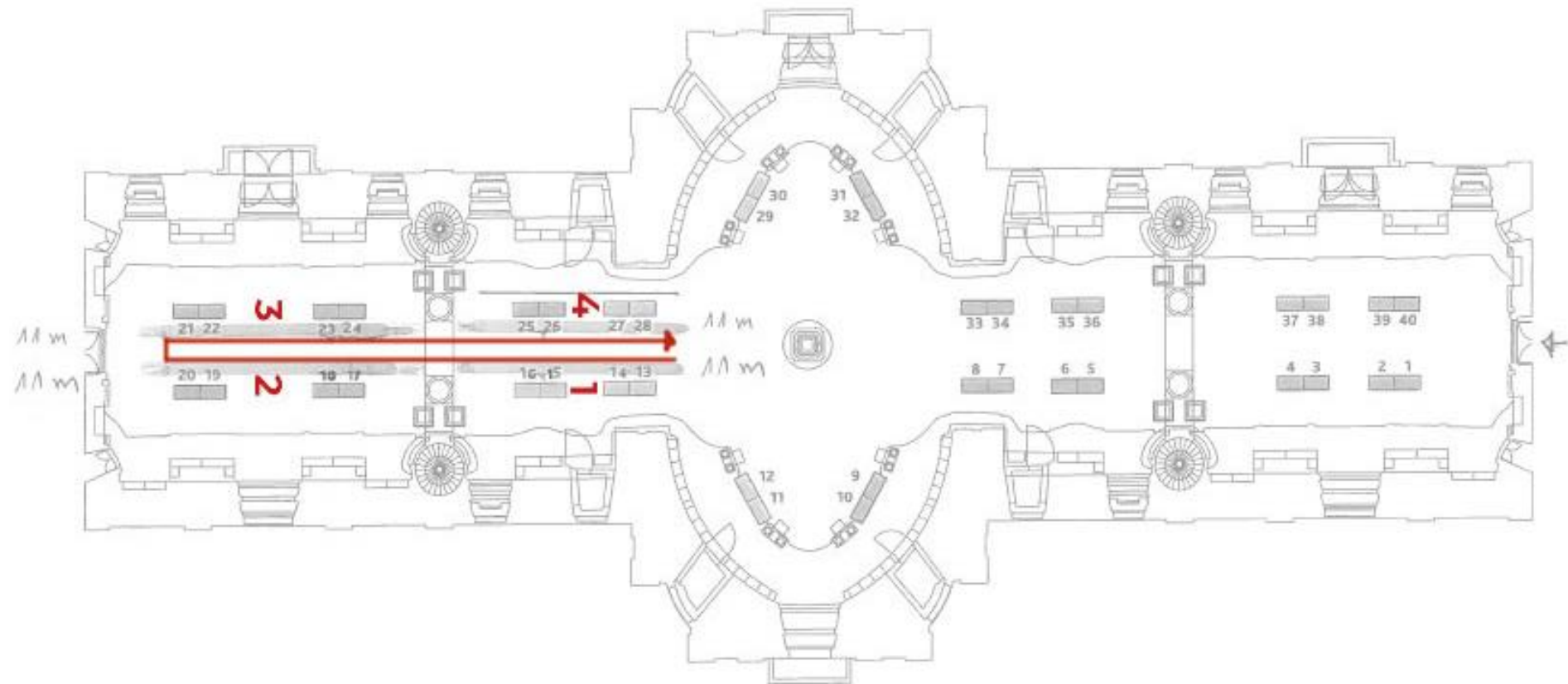


WALL 4

Segment: 40 – 54

Length: 11 meters





WALL 1: Segment 1 – 13, 11 meters long

DIE PASETTI KARTE

Schiffahrts-Karte der Donau im Bereiche des Österreichischen Kaiserstaates, 1857

Mechanism 1788/89 (30% enlargement)
The mechanism gives information on the navigability of the Danube (technical details, navigability and when the river could be crossed)

- Course of the Danube (main channel) with technical details
- Course of the Danube (main channel) with technical details
- Course of the Danube (main channel) with technical details

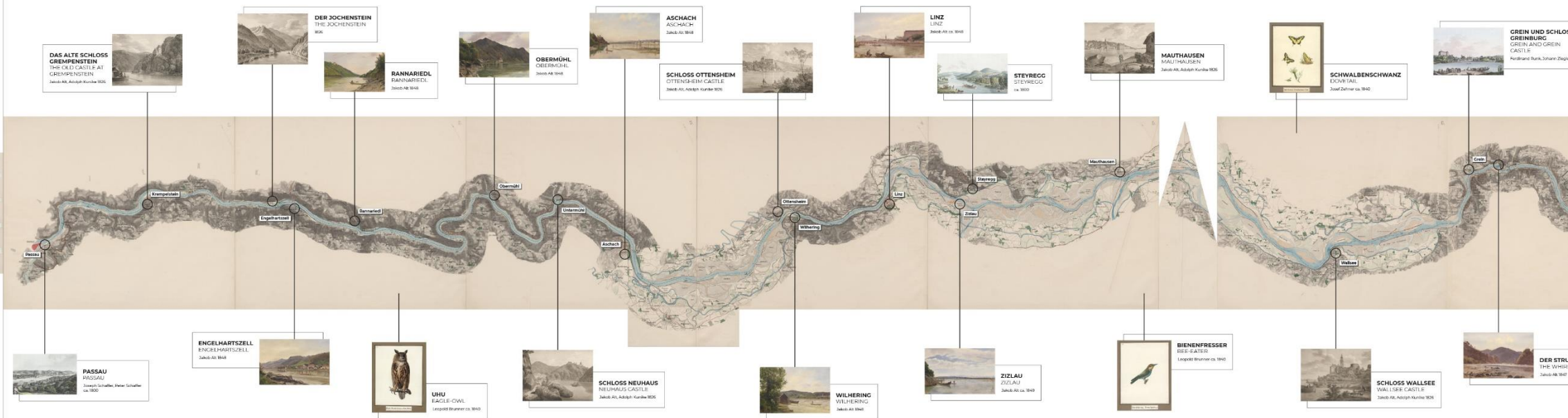


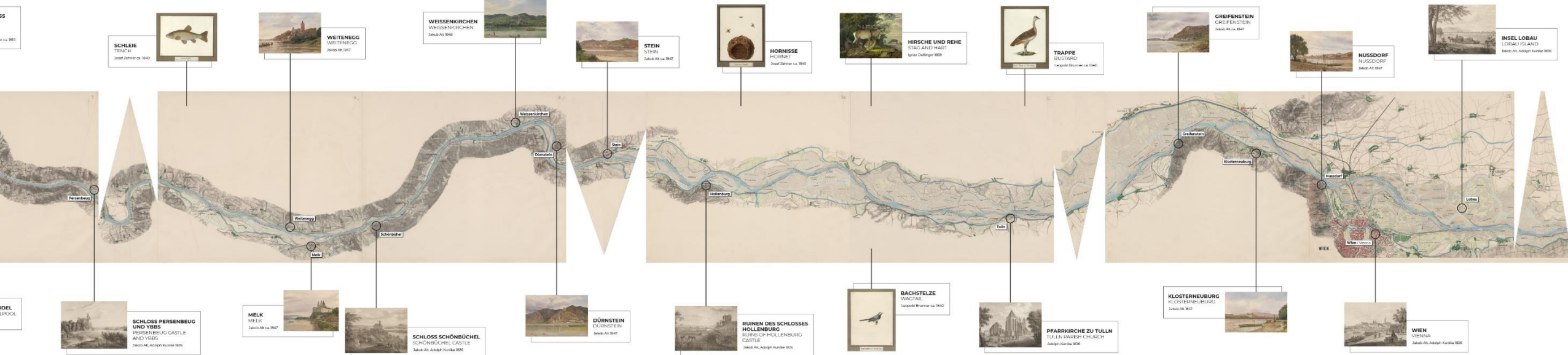
THE PASETTI MAP

River map of the Danube within the Austrian Empire, 1857

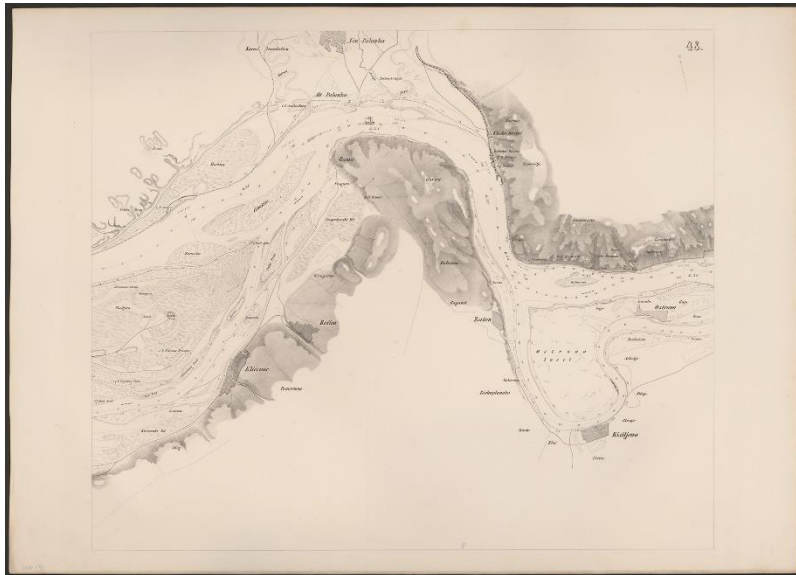
Scale 1:100,000 (30% enlargement)
The map provides information about the state of the river (technical details, navigability and when the river could be crossed)

- Course of the Danube (main channel) with technical details
- Course of the Danube (main channel) with technical details
- Course of the Danube (main channel) with technical details

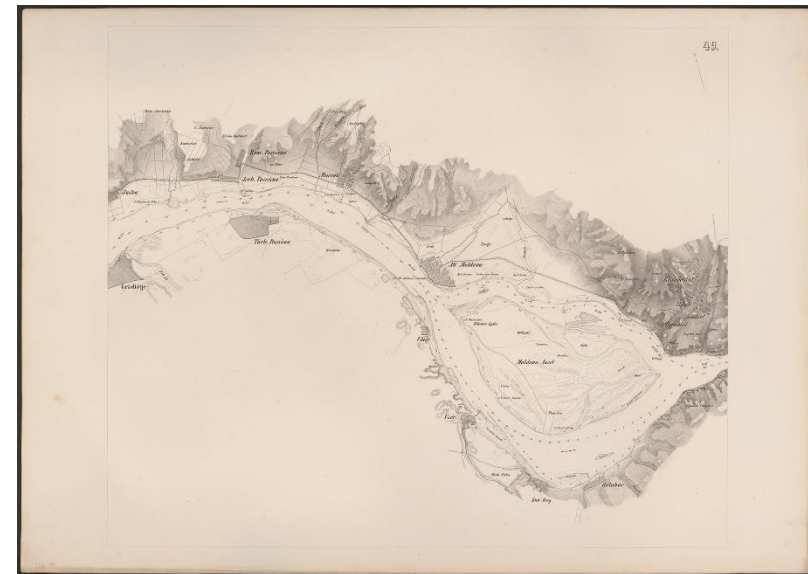
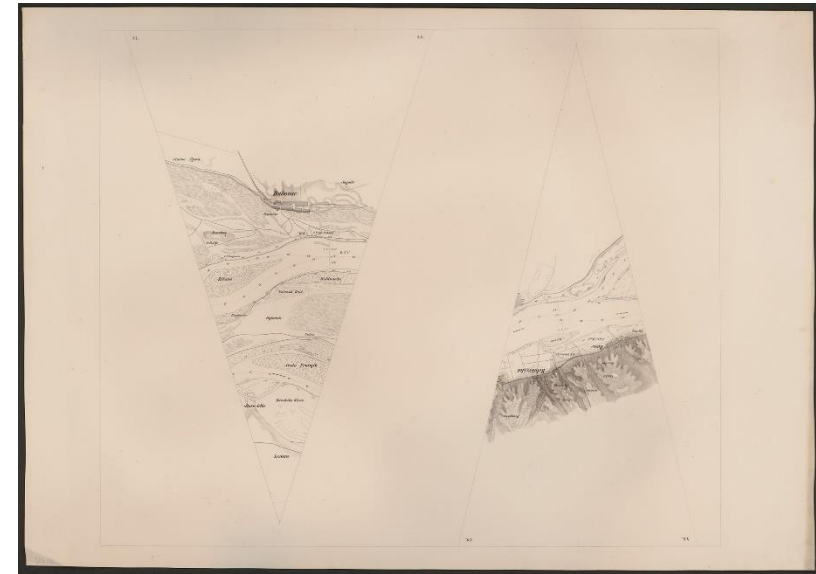




Cutting out the segments
and gussets



segment 48

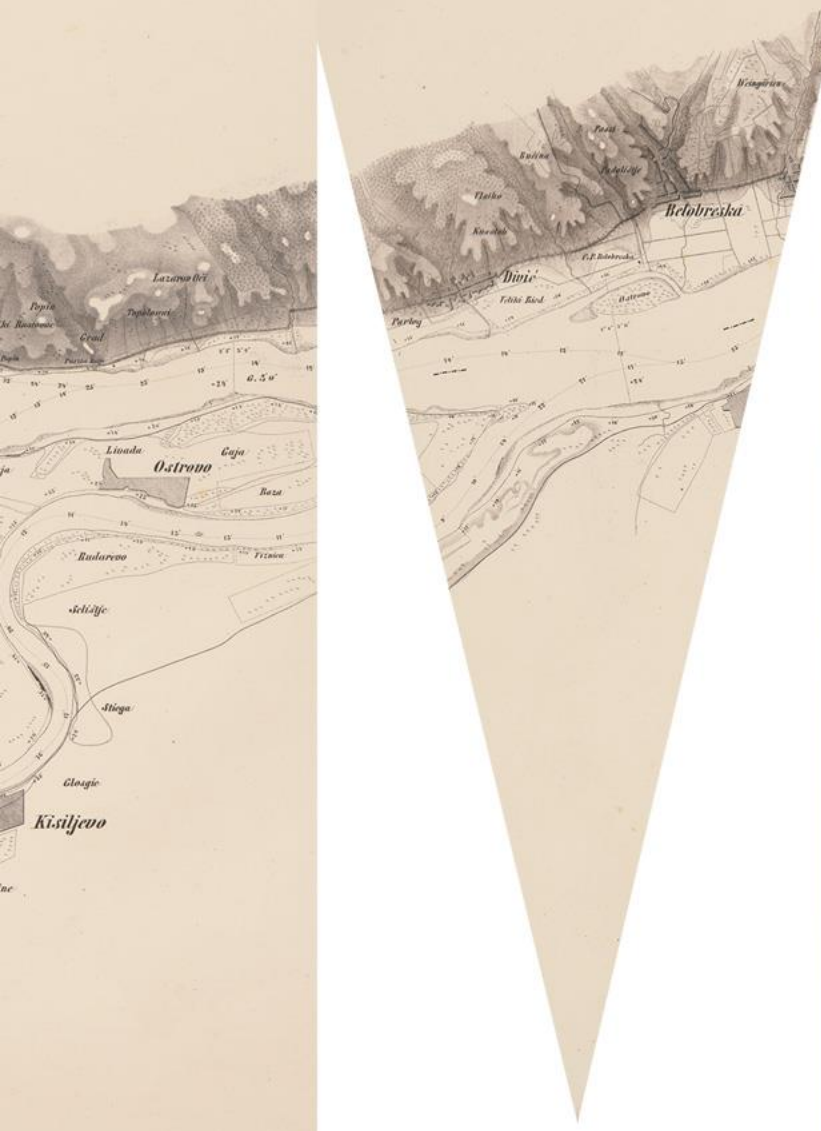


segment 49



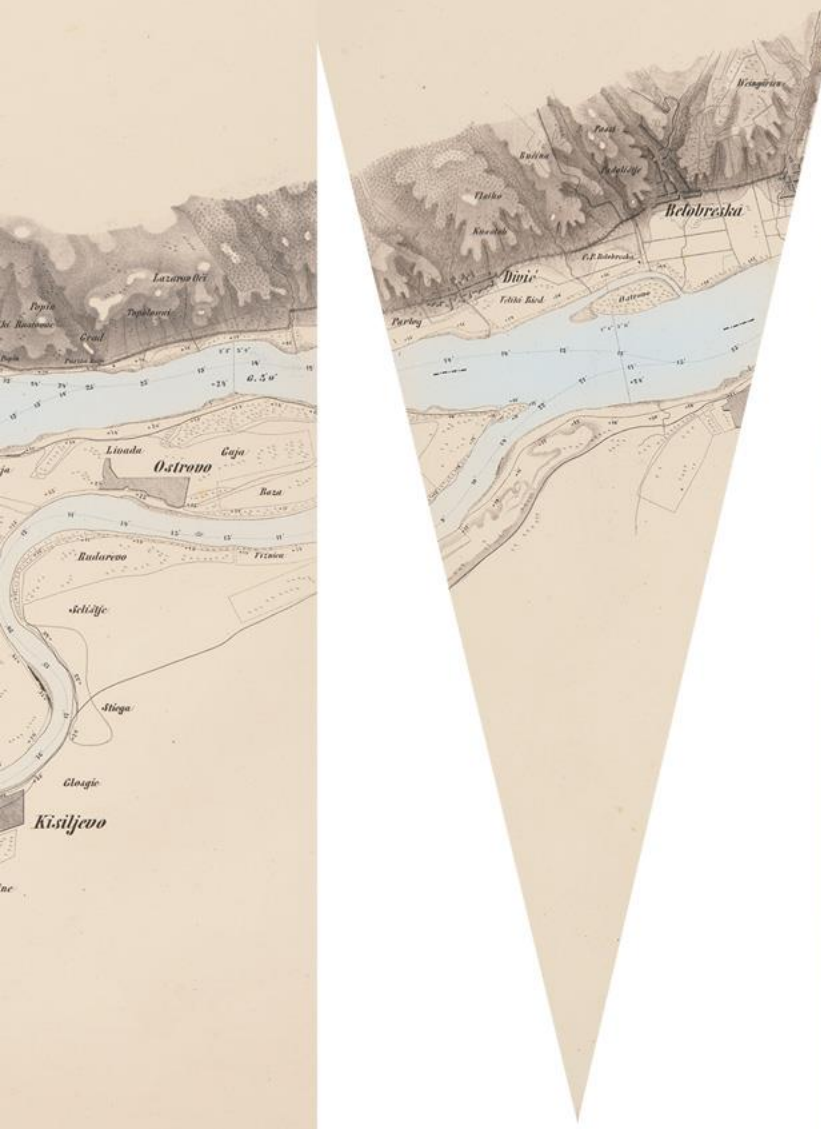
Recolorization



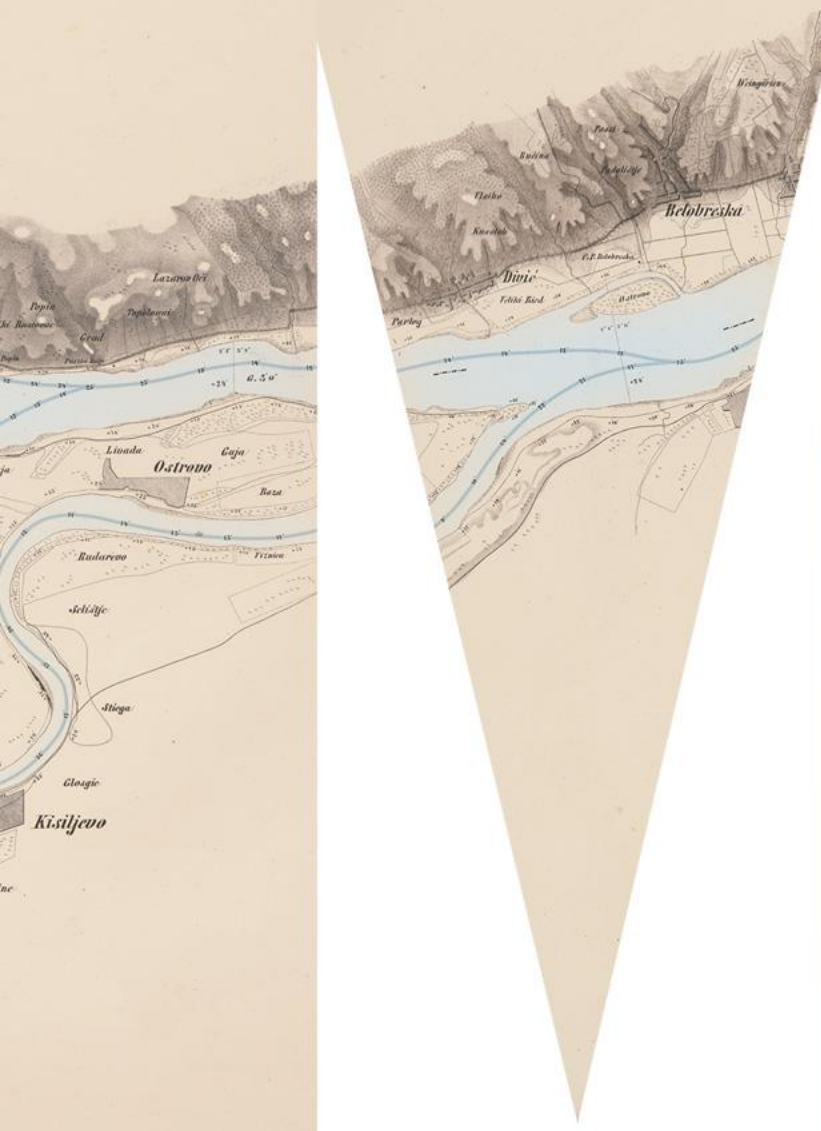


Color matching
of the backgrounds



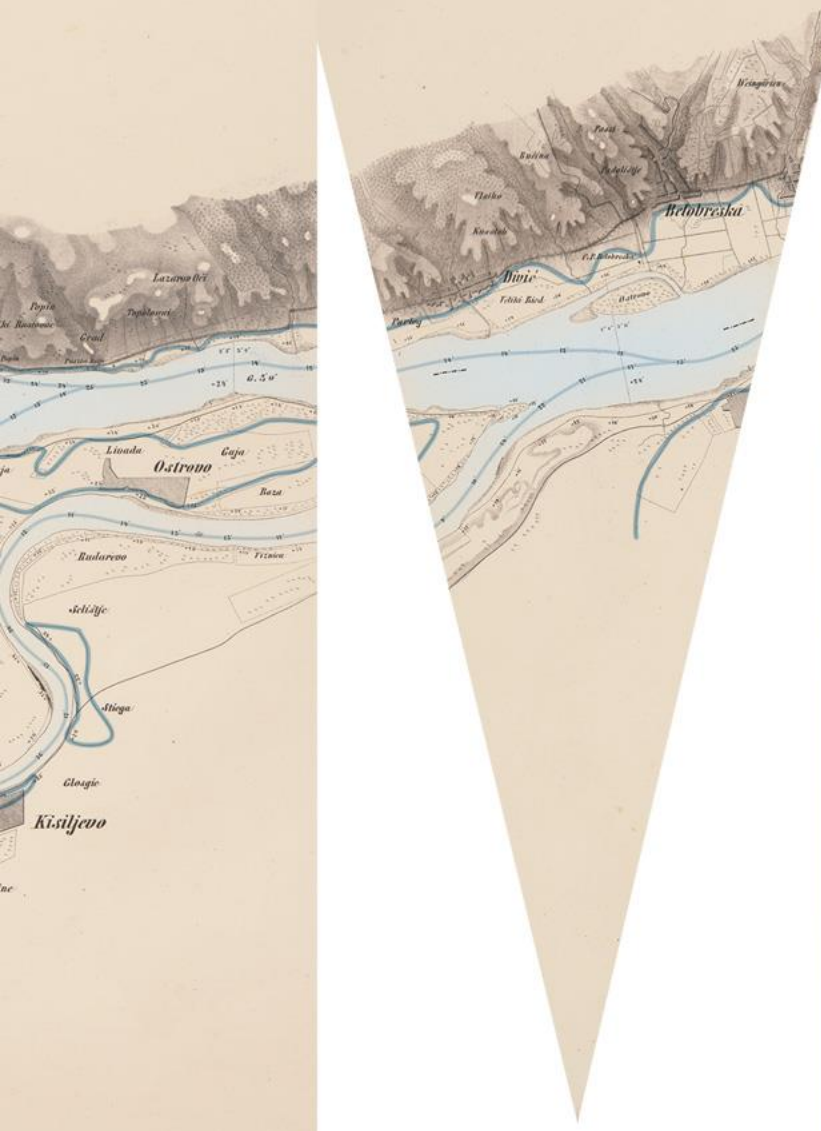


Coloration of the Danube



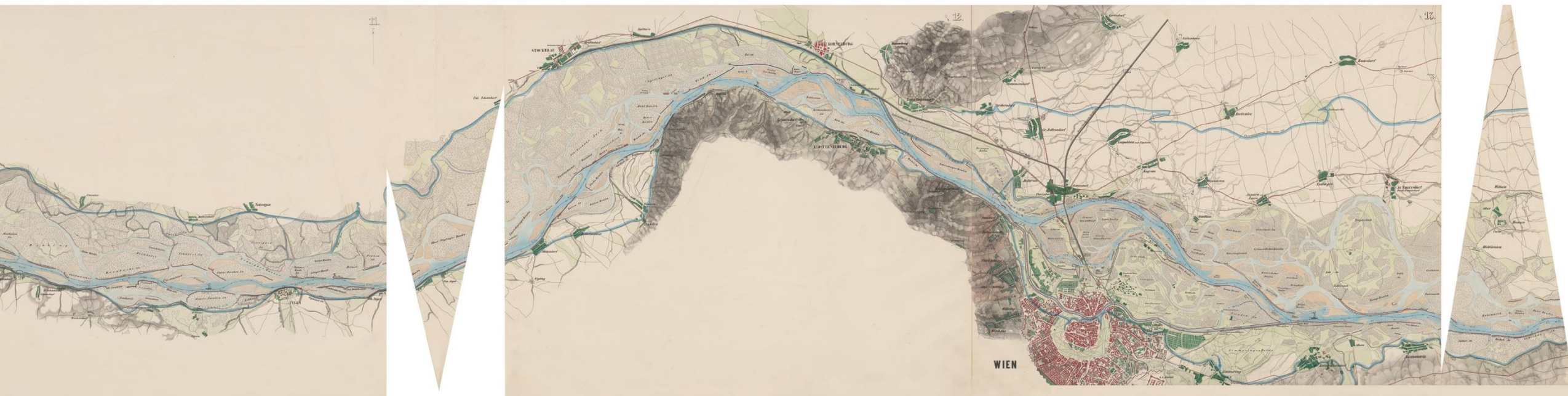
Tracing the streamline
with indications of depth





Tracing of the
flooding lines

Adding places and additional informations





HIRSCHE UND REHE
STAG AND HART
Ignaz Dullinger 1839



TRAPPE
BUSTARD
Leopold Brunner ca. 1840



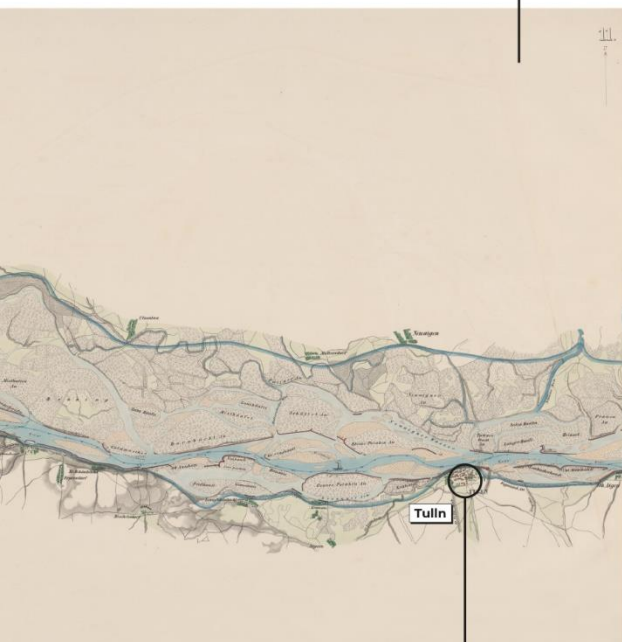
GREIFENSTEIN
GREIFENSTEIN
Jakob Alt ca. 1847



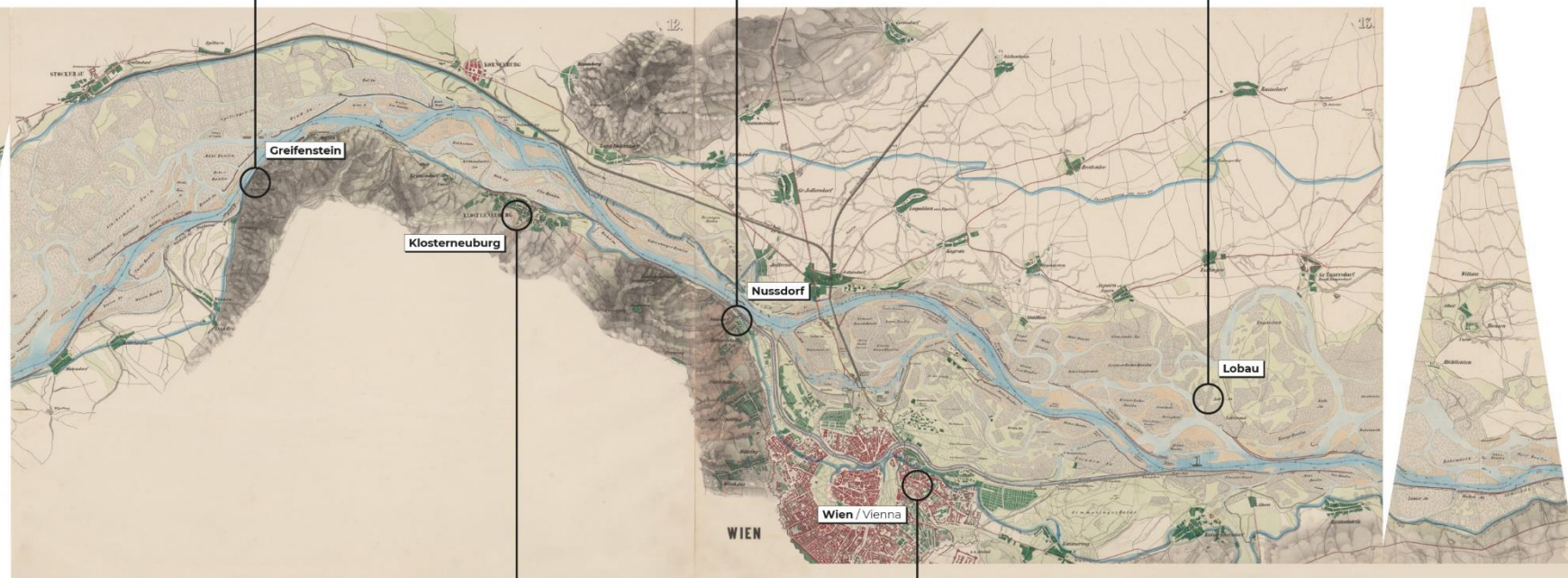
NUSSDORF
NUSSDORF
Jakob Alt 1847



INSEL LOBAU
LOBAU ISLAND
Jakob Alt, Adolph Kunike 1826



Tulln



Greifenstein

Klosterneuburg

Nussdorf

Lobau

Wien / Vienna

WIEN



BACHSTELZE
WAGTAIL
Leopold Brunner ca. 1840



PFARRKIRCHE ZU TULLN
TULLN PARISH CHURCH
Adolph Kunike 1826

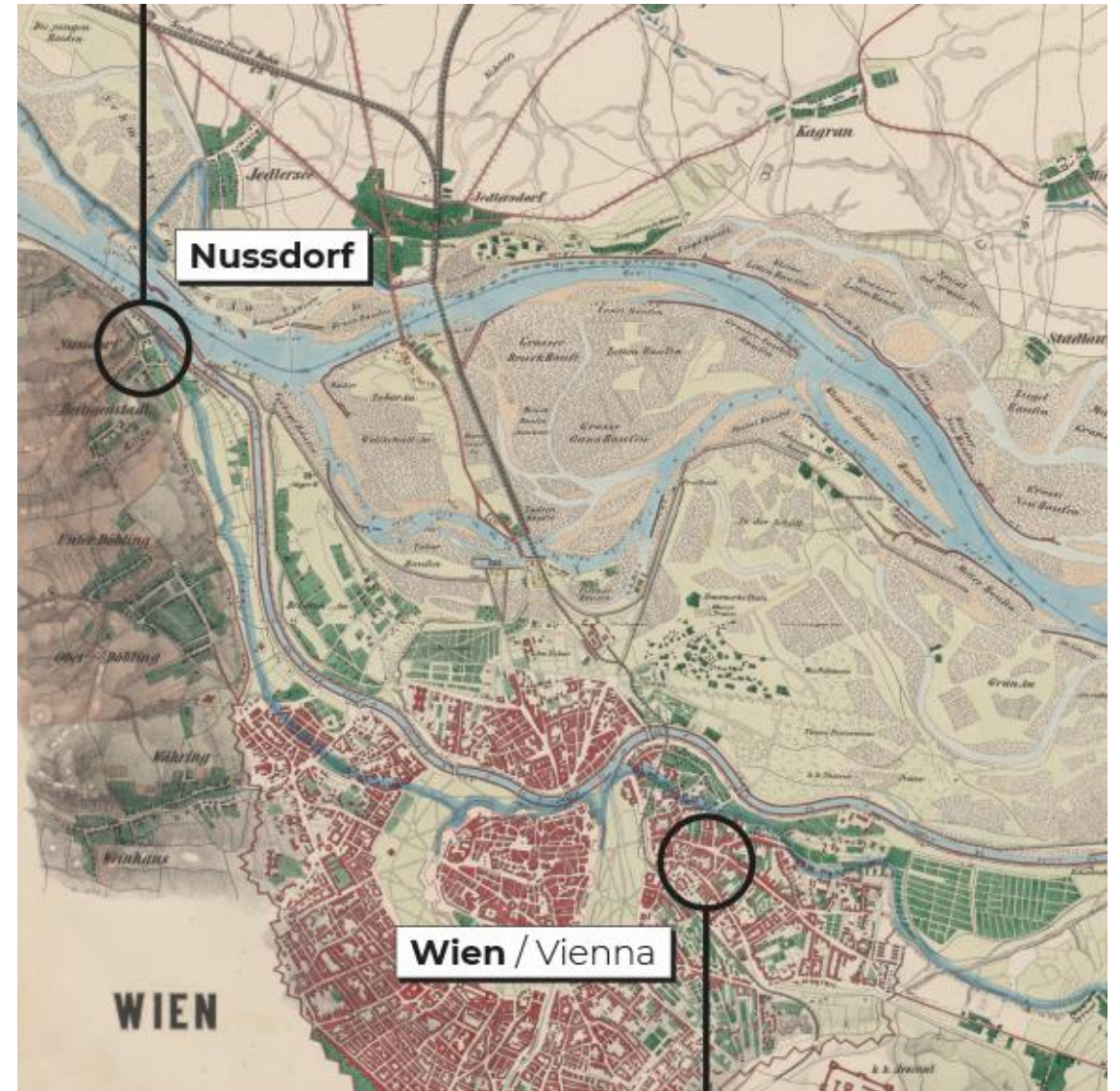
KLOSTERNEUBURG
KLOSTERNEUBURG
Jakob Alt 1847

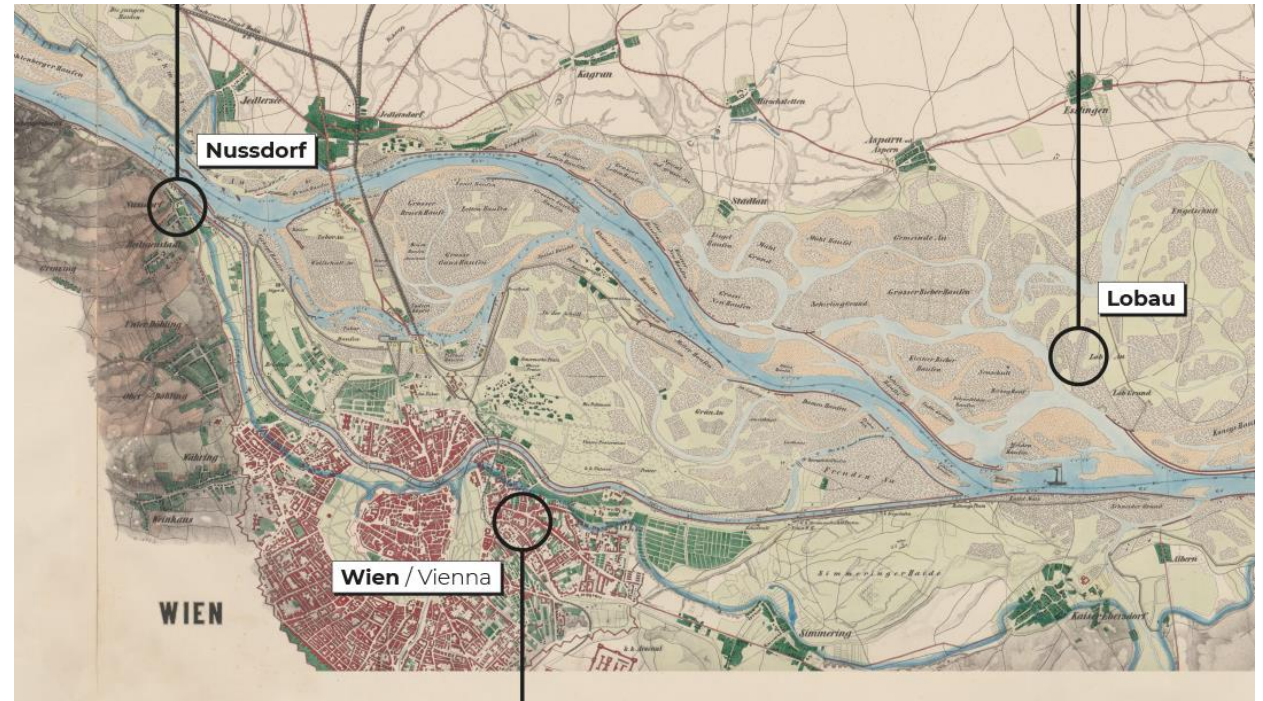


WIEN
VIENNA
Jakob Alt, Adolph Kunike 1826

Location markings

In different languages





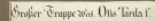
Danube views

The Danube views always
belong to a certain area



WIEN
VIENNA

Jakob Alt, Adolph Kunike 1826



Leopold Brunner ca. 1840



Animal views

The animal views were used when available space allowed it

Thank you for your attention !