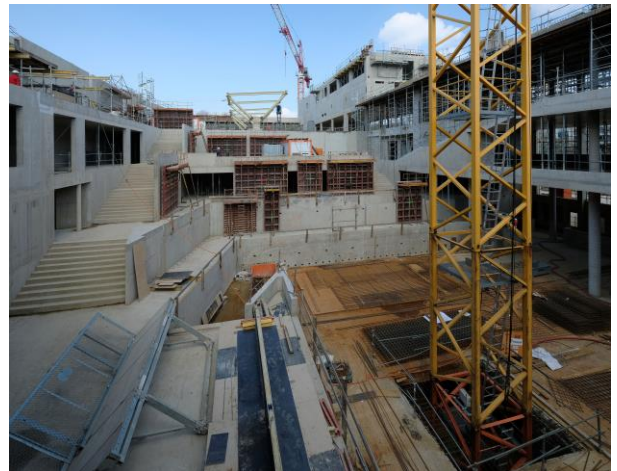


## ANNUAL REPORT TO CENL 2016

<b>Name of country:</b>	Grand-Duchy of Luxembourg
<b>Name of library:</b>	National Library of Luxembourg – Bibliothèque nationale de Luxembourg (BnL)
<b>Name of Chief Executive:</b>	Dr. Monique Kieffer
<b>Mailing address:</b>	37, boulevard F.D. Roosevelt L-2450 Luxembourg
<b>Telephone:</b>	+352 22 97 55 – 1
<b>Fax:</b>	+352 47 56 72
<b>Website:</b>	<a href="http://www.bnl.lu">www.bnl.lu</a>
<b>Online search tool :</b>	<a href="http://www.a-z.lu">www.a-z.lu</a>
<b>Email address:</b>	<a href="mailto:info@bnl.etat.lu">info@bnl.etat.lu</a>

### GENERAL OVERVIEW OF RECENT MAJOR DEVELOPMENTS

The construction of the new building for the National Library of Luxembourg (BnL) at *Plateau de Kirchberg* began in June 2014. The building is set to be finished at the end of 2018.



**NOTE OF THE REPORTING LIBRARY'S RELATIONSHIP TO GOVERNMENT, CITATION OF LEGISLATION WHICH SETS OUT THE LIBRARY'S MANDATE, AND ANY OTHER LEGISLATION WHICH DIRECTLY OR INDIRECTLY AFFECTS THE LIBRARY'S OPERATIONS.**

The National Library of Luxembourg (BnL) is an institution of the Ministry of Culture. Since its creation in 1798, the BnL is a multifunctional library that preserves, collects and catalogues all publications issued in Luxembourg as well as all those issued abroad relating to the Grand Duchy.

The BnL moreover has an encyclopedic function: around two thirds of the books in stock originate from abroad, and cover all fields of knowledge. The present missions and organization of the BnL are defined by the law of June 2004, which has been modified in 2010.

This law extended and specified the missions of the BnL as national computer and digital service provider to Luxembourg libraries as well as the coordinator of the bibnet.lu network and the Consortium Luxembourg. Furthermore, it created a public library service within the National Library. In order to obtain Government funding, public libraries will have to join the national network bibnet.lu. The existing bookmobile service has also been integrated into the BnL and tours the country with two fully equipped buses.



In April 2017, the Bibnet.lu network counts 77 libraries. It uses a shared library system. The libraries' catalogues have been added to the collective library catalog *catalog.bibnet.lu* and integrated into *www.a-z.lu*, a one-stop discovery tool.

**KEY FACTS AND FIGURES**

<b>Collections (print monographs volumes)</b>	<b>2014</b>	<b>2015</b>	<b>2016</b>
Size of major collections			
Non-Luxembourg collection	606.791	613.207	+6639
Luxembourg collection	230.611	234.749	+4134
Operating budget <sup>1</sup>	8.950.000€	9.224.000€	10.100.50€
Subscribed users (BnL+Book mobile)	16.307	17.171	19.187

<sup>1</sup> Salaries included / IT equipment not included

## NEW DEVELOPMENTS IN CREATING AND BUILDING COLLECTIONS

### A discovery tool to discover the libraries' resources



**a-z.lu**, the one stop discovery tool allows users to search simultaneously in the network catalog bibnet.lu as well as in the eluxemburgensia.lu (digitized Luxembourgish newspapers, journals, posters and manuscripts), findit.lu portals (licensed ebooks, ejournals and data bases) and in the database of the Centre national de Littérature. a-z.lu is available in responsive design and fits every screen, even the smallest.

In 2017, **Orbi<sup>lu</sup> - Open Repository and Bibliography** of the University of Luxembourg has been integrated into the discovery tool. This new development carried out by the BnL in collaboration with Uni.lu enables the University's scientific publications to be better valued by increasing their visibility beyond the world of researchers and for the benefit of other audiences. Connecting ORBi<sup>lu</sup> to a-z.lu thus contributes to a more open dissemination of research results and to the democratization of access to knowledge.

Furthermore, **bibgouv.findit.lu** was launched in February 2017. This digital government library is a cooperation between the Ministry of Civil Service, the State Information Technology Center and the National Library. **bibgouv.findit.lu** provides the state administrations with specialized digital resources, thereby meeting the professional documentation and training needs of the agents.

The BnL introduced **selfloan** in its Media library. More than 15,000 DVDs, Blu-ray, CD and language learning methods can be borrowed and returned by the users themselves via a multilingual automatic terminal using RFID technology.

The RFID pilot project at the Médiathèque allows the BnL to test this new technology for its implementation in the new building.

### Access to e-publications

Findit.lu, launched in 2002, is the largest digital library in Luxembourg entirely focused on digital content. In 2016, a key milestone of the reorganisation was successfully completed as the entire backoffice was streamlined and implemented in the [Consortiamanager.com](http://Consortiamanager.com) software. This cloud-based software is now used to manage the complete lifecycle of subscriptions, combining licence management, negotiation support, ordering, statistics and invoicing. For optimal transparency, dashboards for library administrators in our member organisations are now available. A result of the reorganisation is the addition of new members in 2017 under the new service model, such as the [Max-Planck Institute Luxembourg](http://Max-Planck Institute Luxembourg) and the new digital gouvernement library ([bibgouv.findit.lu](http://bibgouv.findit.lu)). Consortial services are centralized at the National Library. *findit.lu* is a key player in developing the knowledge society, serving academia, research and the general public. The current offer of *findit.lu* consists of over 55 000 electronic journal titles, 309.000 science ebooks and several hundred specialized databases and reference platforms in English, French and German.findit.lu.



The BnL and the “Conseil supérieur des bibliothèques publiques” launched, ebooks.lu, a new service that allows public library users to borrow ebooks for free for 2 weeks. The ebooks can be downloaded on multiple devices and read

offline. A special website with further informations has been created: [www.ebooks.lu](http://www.ebooks.lu). There are currently 80.000 ebooks ( in different languages) in this offer.

### Access to digitized content by BnL

The portal *eluxemburgensia*, driven by DigiTool, gives access to the OCRed digital collection. The METS (Metadata Encoding and Transmission Standard) and ALTO (analyzed layout and text object) technology allow DigiTool to perform a full-text search and to display results at article and page level, with the search term highlighted in the results. An in-house developed viewer offering enhanced functions is available since 2010. The BnL made it available as open source <http://sourceforge.net/projects/bnlviewer/> and it has already been re-used by the National Library of Latvia and the National Library of Serbia. The BnL will soon replace DigiTool with a new and improved viewing tool.



eluxemburgensia.lu counts 28 digitised periodicals, more than 2.6 million articles and about 450 books from the 19<sup>th</sup> and 20<sup>th</sup> century and over 200 Luxembourgish posters from the 19<sup>th</sup> and 20<sup>th</sup> century. All the contents of eluxemburgensia.lu can be accessed via a-z.lu.

The BnL launched its 5<sup>th</sup> digitization campaign. 31 Luxembourgish periodicals and 2 serial publications will be digitized and made available online at the end of 2017. In addition, the BnL organized two harvesting campaigns of the Luxembourg web space in collaboration with the Internet Archive Foundation. 127,487 Luxembourgish websites have been harvested which amounts to 122,433,863 files.

As the BnL is a founding member of the *Réseau francophone numérique (rfnum)*, a subset of its digitized titles in French language is available via the rfnum website [<http://www.rfnum.org>].

The BnL is an active member of Europeana and has provided to date **more than 63.000** objects to Europeana. The BnL worked together with Europeana on the project: “Europeana Awareness” from 2012 to 2014 and continues to supervise the intellectual property section. The BnL developed along with its partners the new “Europeana Data Exchange Agreement” as well as the “Europeana Public Domain Charter” and the legal framework for “User generated Content”. The BnL helped redevelop Europeana’s Public Domain Calculator and the newly launched website [www.outofcopyright.eu](http://www.outofcopyright.eu).

The BnL worked together with [Europeana](#) and the [Digital Public Library of America](#) (DPLA) to launch the service RightsStatements.org. It provides 11 standardized [rights statements](#) that can be used by cultural heritage institutions to communicate the copyright status of digital objects. These statements provide a baseline standard for organizations contributing to the DPLA, Europeana and any other digital aggregator that adopts the RightsStatements.org standard. The technical infrastructure of is hosted in a datacenter in Luxembourg.

#### **EXAMPLES OF COLLABORATION BETWEEN THE REPORTING LIBRARY AND OTHER NATIONAL COLLECTING INSTITUTIONS (LIBRARIES, ARCHIVES AND MUSEUMS)**

The National Library coordinates the network of Luxembourg libraries *bibnet.lu* [www.bibnet.lu] (77 members, including the library of the University of Luxembourg, school libraries and specialised ones).

The BnL is a member of VIAF The *Virtual International Authority File* and has signed the contractual agreement with the ISNI International Agency to become an appointed ISO 2772 Registration Agency. (International Standard Name Identifier)

Mrs Monique Kieffer, director of the BnL, presides the “Conseil supérieur des bibliothèques publiques”, a council that assembles representatives of the Luxembourgish public libraries.

Together with the National Archive and the “Centre des technologies de l’Information de l’État (CTIE), the National Library currently works on a mutualised platform for long term digital preservation.

#### **Varia**

In 2016, the National Library of Luxembourg hosted several conferences, exhibitions, guided tours of the library as well as school presentations of its online services and collections.