

<b>Name of national library in full (in your own language and in anglicised form):</b>	<a href="http://www.bnf.fr">Bibliothèque nationale de France</a> National Library of France
<b>Name of Director General with official title:</b>	Laurence Engel
<b>Main library address:</b>	quai François Mauriac 75707 Paris cedex 13 France
<b>Current logo as a .jpg:</b>	



**Exterior -**

<https://www.google.co.uk/maps/place/The+Fran%C3%A7ois-Mitterrand+Library/>



**Reading room 1**

[http://www.bnf.fr/fr/la\\_bnf/bibliotheque\\_haut-de-jardin.html](http://www.bnf.fr/fr/la_bnf/bibliotheque_haut-de-jardin.html)



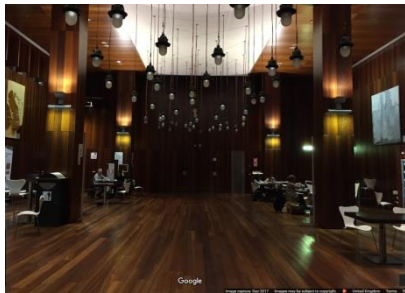
**Reading room 2**

<https://www.google.co.uk/maps/place/The+Fran%C3%A7ois-Mitterrand+Library/>

### Digital Media space -



[http://www.bnf.fr/fr/la\\_bnf/bibliotheque\\_haut-de-jardin.html](http://www.bnf.fr/fr/la_bnf/bibliotheque_haut-de-jardin.html)



### Exhibition Space -

<https://www.google.co.uk/maps/place/The+Fran%C3%A7ois-Mitterrand+Library/>



### Book shop -

<https://www.google.co.uk/maps/place/The+Fran%C3%A7ois-Mitterrand+Library/>



### Seating Area

<https://www.google.co.uk/maps/place/The+Fran%C3%A7ois-Mitterrand+Library/>

1) Please provide brief details on the history of your library buildings.

	Answer
<b>Year (first) library building opened</b>	1692 (1 <sup>st</sup> opened to the public); installed in 1721 on the Richelieu site
<b>Architect of (first) library building</b>	Jean Thiriot (Richelieu site)
<b>Year (current) library building opened</b>	1996 (François-Mitterrand site)
<b>Architect of (current) library building</b>	Dominique Perrault
<b>Any additional information. Eg length of build/cost of build/reason for build</b>	<p>Upon Labrouste's death in 1875 the library was further expanded, including the grand staircase and the Oval Room, by academic architect Jean-Louis Pascal.</p> <p>In 1988, President François Mitterrand announced the construction and the expansion of one of the largest and most modern libraries in the world, intended to cover all fields of knowledge, and designed to be accessible to all. The services of the architectural firm of Dominique Perrault were retained. The National Library of France <b>opened on 20</b> December 1996.</p>